

## GENIUS CONTROL 010V

### GENERAL INFORMATION

The GENIUS CONTROL 010V is an accessory device that can be combined with the GENIUS POWER series. It serves to convert an analog signal 0/10V, originated by standard devices such as PLC or a simple potentiometer, into a serial digital signal BUS used for the control of the flux regulators. The converter is fed by the network and it is assembled in a 2 units modular box, simple to be installed on a standard omega bar

CODE	MODEL
100939	GENIUS CONTROL 010V

### FUNCTIONAL CHARACTERISTICS

- It operates combined with the GENIUS POWER series
- It converts the analog signal 0/10V into a serial digital signal RS232 implemented BUS protocol
- Autonomous feeding
- 2 units modular box for omega bar

### EQUIPMENT

- Analog input 0/10V with screw clamps
- Serial digital output RS232 with BUS protocol with screw clamps
- Screw clamp for network feeding

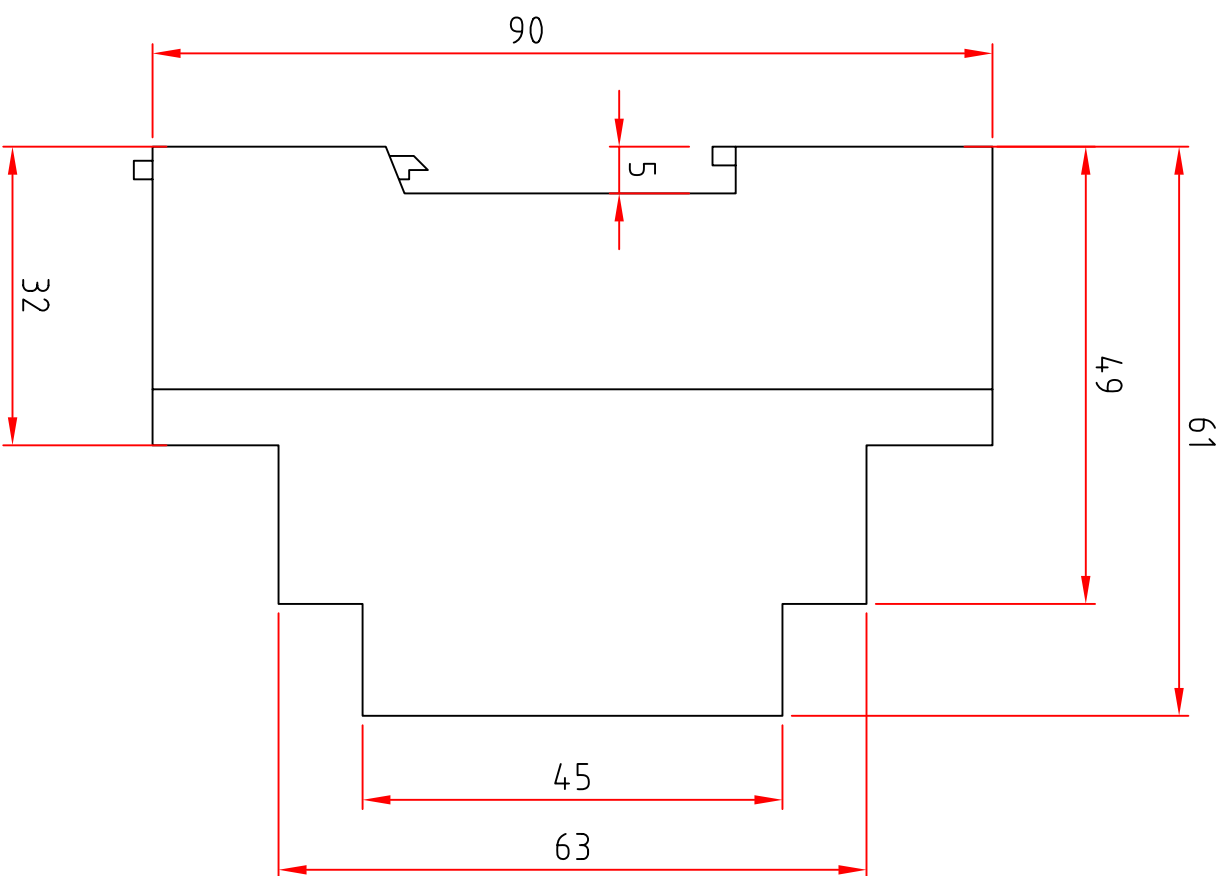
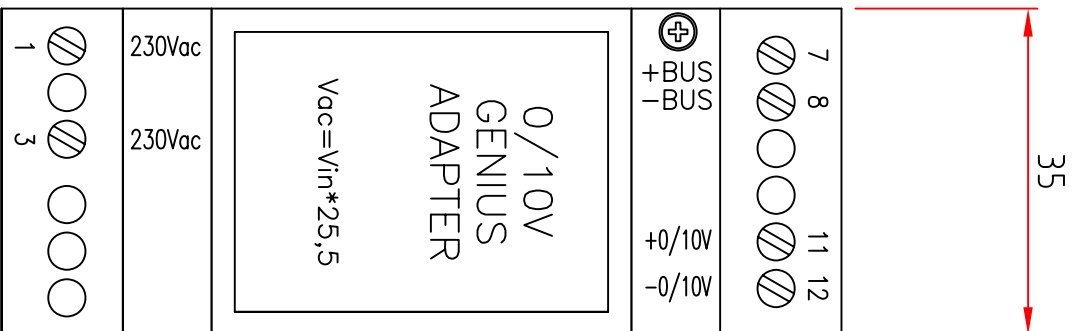
### TECHNICAL CHARACTERISTICS

PARAMETER	VALUE
Supply voltage	230VAC $\pm$ 15%
Isolation class	Class I
Operating temperature	From $-10^{\circ}\text{C}$ to $+45^{\circ}\text{C}$
Storage temperature	From $-25^{\circ}\text{C}$ to $+75^{\circ}\text{C}$
Humidity	Up to 90% without condensate
Protection degree	IP20
Weight	4Kg
Terminal cross section	Solid conductor 2.5mm <sup>2</sup>
Dimension [mm]	90 x 17,5 x 60

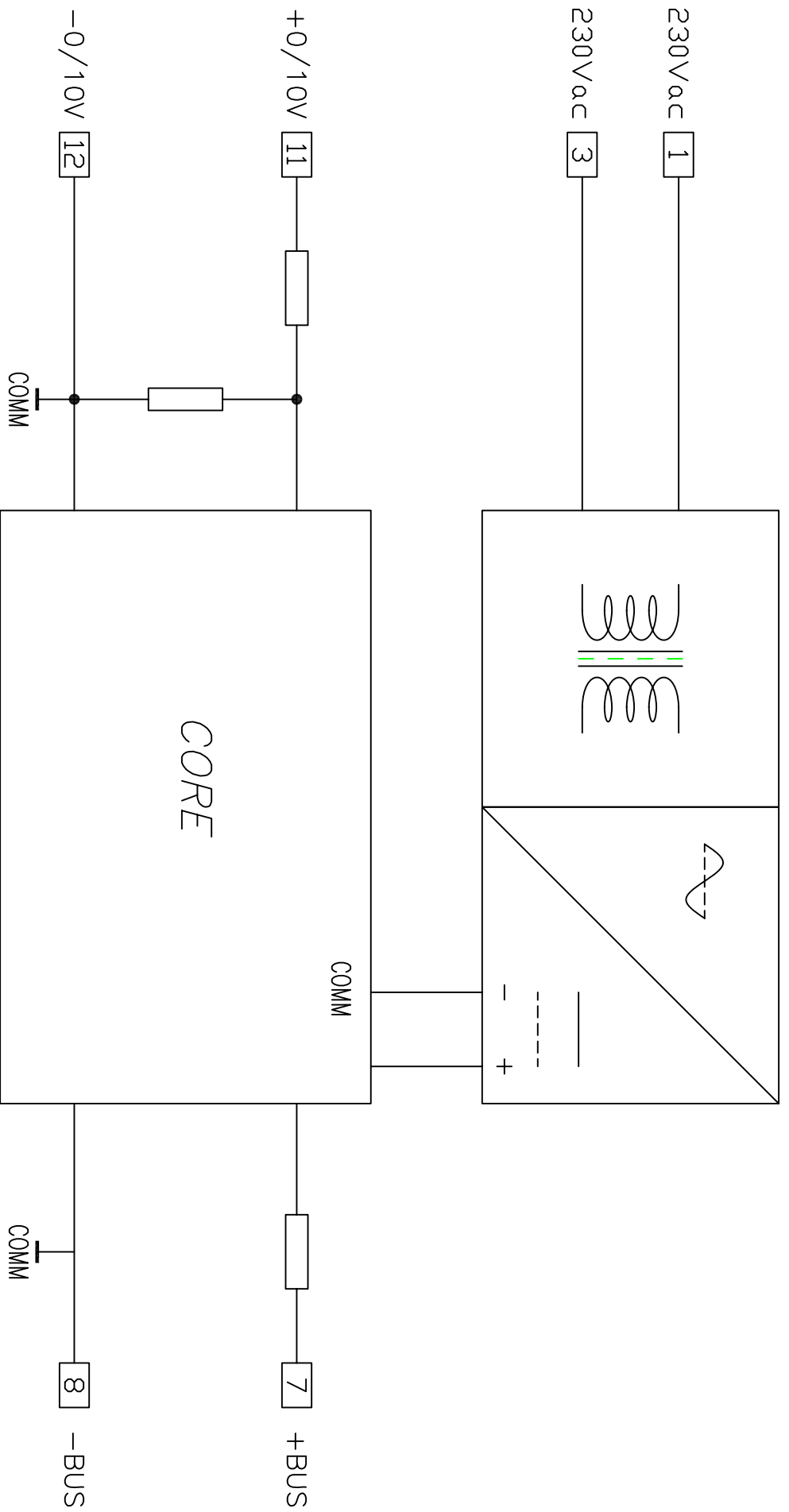
## CONNECTIONS



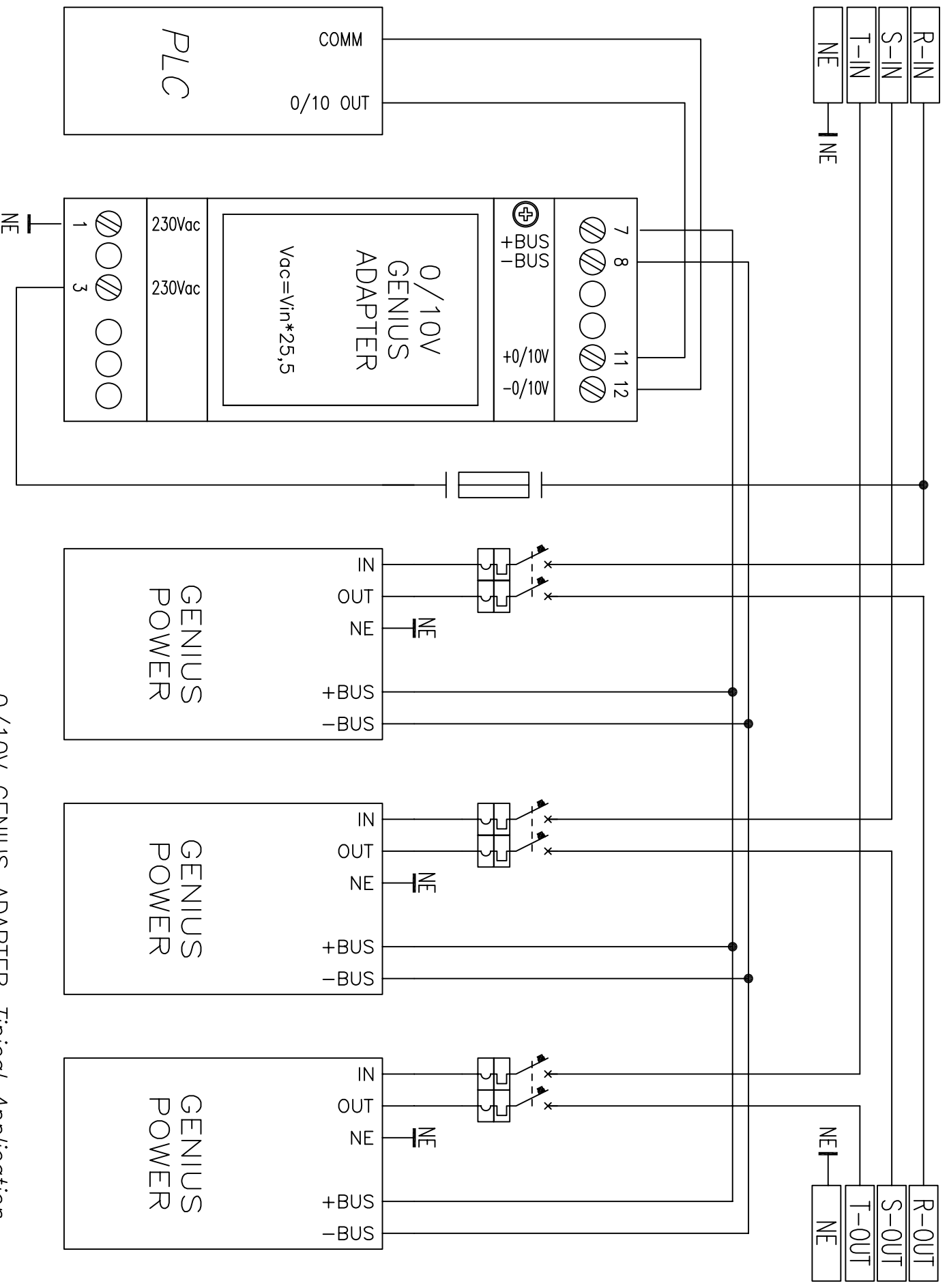
TERMINAL	DESCRIPTION
230Vac	POWER INPUT 230VAC 1P+NE
230Vac	
+BUS	OUTPUT SERIAL COMMUNICATIONS WITH GENIUS POWER
-BUS	
+0/10V	INPUT SIGNAL CONTROL 0÷10V
-0/10V	



0/10V GENIUS ADAPTER Dimension Drawing



0/10V GENIUS ADAPTER Schematic block diagram



0/10V GENIUS ADAPTER Typical Application